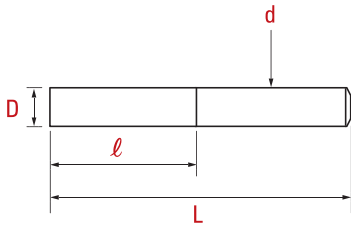


# HSS-Co 8% 2F End Mills

하이스 2날  
엔드밀  
SKH59



Item no. 제품코드	D 외경	l 날장	L 전장	d 샤푼크
EM03H9-010	1.0	2.5	55	6
EM03H9-015	1.5	4	55	6
EM03H9-020	2.0	6	55	6
EM03H9-025	2.5	7	55	6
EM03H9-030	3.0	10	55	6
EM03H9-035	3.5	12	60	6
EM03H9-040	4.0	12	60	6
EM03H9-045	4.5	15	65	6
EM03H9-050	5.0	15	65	6
EM03H9-055	5.5	15	65	6
EM03H9-060	6.0	15	65	6
EM03H9-065	6.5	20	75	8
EM03H9-070	7.0	20	75	8
EM03H9-075	7.5	20	75	8
EM03H9-080	8.0	20	75	8
EM03H9-085	8.5	25	80	10
EM03H9-090	9.0	25	80	10
EM03H9-095	9.5	25	80	10
EM03H9-100	10.0	26	80	10
EM03H9-105	10.5	30	90	12
EM03H9-110	11.0	30	90	12
EM03H9-115	11.5	30	90	12
EM03H9-120	12.0	31	90	12
EM03H9-125	12.5	35	95	12
EM03H9-130	13.0	35	95	12
EM03H9-140	14.0	35	100	16
EM03H9-150	15.0	40	105	16
EM03H9-160	16.0	40	105	16
EM03H9-170	17.0	40	105	16
EM03H9-180	18.0	40	105	16
EM03H9-190	19.0	45	115	20
EM03H9-200	20.0	45	115	20
EM03H9-210	21.0	45	115	20

Item no. 제품코드	D 외경	l 날장	L 전장	d 샤푼크
EM03H9-220	22.0	45	115	20
EM03H9-240	24.0	50	125	25
EM03H9-250	25.0	50	125	25
EM03H9-260	26.0	50	125	25
EM03H9-280	28.0	55	125	25
EM03H9-300	30.0	55	125	25
EM03H9-320	32.0	60	145	32
EM03H9-340	34.0	60	145	32
EM03H9-350	35.0	60	145	32
EM03H9-360	36.0	65	150	32
EM03H9-380	38.0	65	150	32
EM03H9-400	40.0	65	150	32
EM03H9-420	42.0	70	160	42
EM03H9-440	44.0	70	160	42
EM03H9-450	45.0	70	160	42
EM03H9-460	46.0	75	160	42
EM03H9-480	48.0	75	165	42
EM03H9-500	50.0	75	165	42

- Products except for the above standard items will be produced by the special order.
- 상기 목록 이외의 제품은 주문에 의해 제작됩니다.
- For the coating products item number, TiN or TiCN is added after the item no.  
ex) Item no. - TiN or Item no. - TiCN
- 코팅 제품의 아이템 번호는 Item no. 뒤에 TiN 또는 TiCN이 추가됩니다.  
ex) Item no. - TiN 또는 Item no. - TiCN

Tolerance (허용공차)		
D	d	L
h10	h6	±1