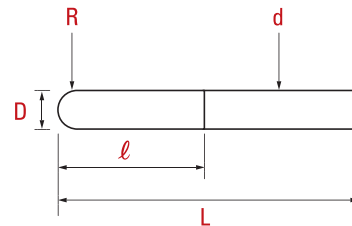


# HSS-Co 8% 2F Ball End Mills

하이스 2날  
볼 엔드밀  
SKH59



Item no. 제품코드	D 외경	ℓ 날장	L 전장	d 샙크
EM05H9-005	R 0.5	2.5	50	6
EM05H9-007	R 0.75	4	50	6
EM05H9-010	R 1.0	6	50	6
EM05H9-012	R 1.25	8	60	6
EM05H9-015	R 1.5	8	60	6
EM05H9-020	R 2.0	8	70	6
EM05H9-025	R 2.5	10	80	6
EM05H9-030	R 3.0	12	90	6
EM05H9-035	R 3.5	14	90	8
EM05H9-040	R 4.0	14	100	8
EM05H9-045	R 4.5	18	100	10
EM05H9-050	R 5.0	18	100	10
EM05H9-055	R 5.5	22	100	12
EM05H9-060	R 6.0	22	110	12
EM05H9-065	R 6.5	26	110	12
EM05H9-070	R 7.0	26	110	12
EM05H9-075	R 7.5	30	110	12
EM05H9-080	R 8.0	30	140	16
EM05H9-085	R 8.5	34	140	16
EM05H9-090	R 9.0	34	140	16
EM05H9-095	R 9.5	38	140	16
EM05H9-100	R 10.0	38	160	20
EM05H9-105	R 10.5	45	170	20
EM05H9-110	R 11.0	45	170	20

Item no. 제품코드	D 외경	ℓ 날장	L 전장	d 샙크
EM05H9-115	R 11.5	50	180	20
EM05H9-120	R 12.0	50	180	25
EM05H9-125	R 12.5	50	180	25
EM05H9-130	R 13.0	50	180	25
EM05H9-135	R 13.5	50	180	25
EM05H9-140	R 14.0	50	180	25
EM05H9-150	R 15.0	55	180	25
EM05H9-160	R 16.0	60	180	32
EM05H9-175	R 17.5	60	180	32
EM05H9-200	R 20.0	65	200	32
EM05H9-250	R 25.0	75	210	42

- Products except for the above standard items will be produced by the special order.
- 상기 목록 이외의 제품은 주문에 의해 제작됩니다.
- For the coating products item number, TiN or TiCN is added after the item no.  
ex) Item no. - TiN or Item no. - TiCN
- 코팅 제품의 아이템 번호는 Item no. 뒤에 TiN 또는 TiCN이 추가됩니다.  
ex) Item no. - TiN 또는 Item no. - TiCN

Tolerance (허용공차)		
D	d	L
h10	h6	±1